



TRAPEZOIDAL **CONSOLE LP**



R3 Bourton Industrial Park, Bourton on the Water, Glos, GL54 2HQ, UK

Tel: +44 1451 824 312

Email: info@sunfixings.co.uk

WWW.SUNFIXINGS.CO.UK

V042017

2

Fitting the Trapezoidal Console LP

Tools & Items Required



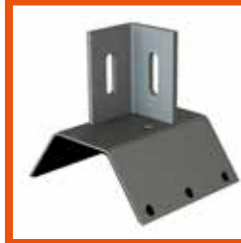
Layout



8mm Hex
Socket Driver



Battery Drill
(NOT Impactor)



Trapezoidal
Console LP



Self Drilling
Screw

Use the layout to confirm the position of the Trapezoidal Console LP.



3

DO NOT overtighten or squash the washer

