



TRAPEZOIDAL **CONSOLE**



R3 Bourton Industrial Park, Bourton on the Water, Glos, GL54 2HQ, UK

Tel: +44 1451 824 312

Email: info@sunfixings.co.uk

WWW.SUNFIXINGS.CO.UK

V092017

2

Fitting the Trapezoidal Console

Tools & Items Required



Layout



8mm Hex
Socket Driver



Battery Drill
(NOT Impactor)



Trapezoidal
Console



Self Drilling
Screw

Use the layout to confirm:

- the position of the Trapezoidal Console
- how many Self Drilling Screws are required
- which fixing holes in the Trapezoidal Console



**NO
IMPACTORS**



Do not overtighten or squash the washer

Tools & Items Required



Layout



8mm Hex
Socket Driver



Battery Drill
(NOT Impactor)



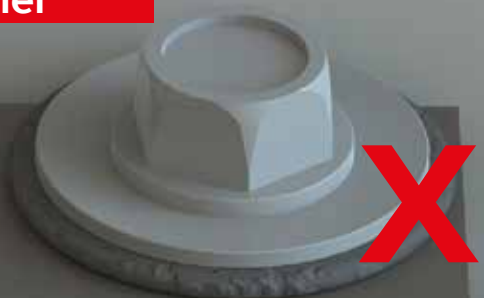
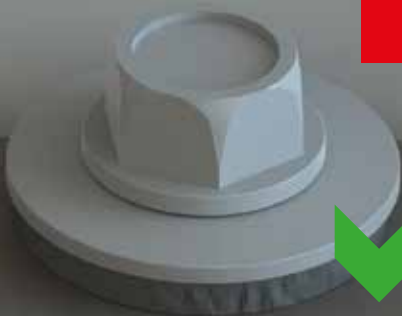
Trapezoidal
Console



Self Drilling
Screw



DO NOT overtighten or
squash the washer



4

Attach the M10 Rod to the Trapezoidal Console

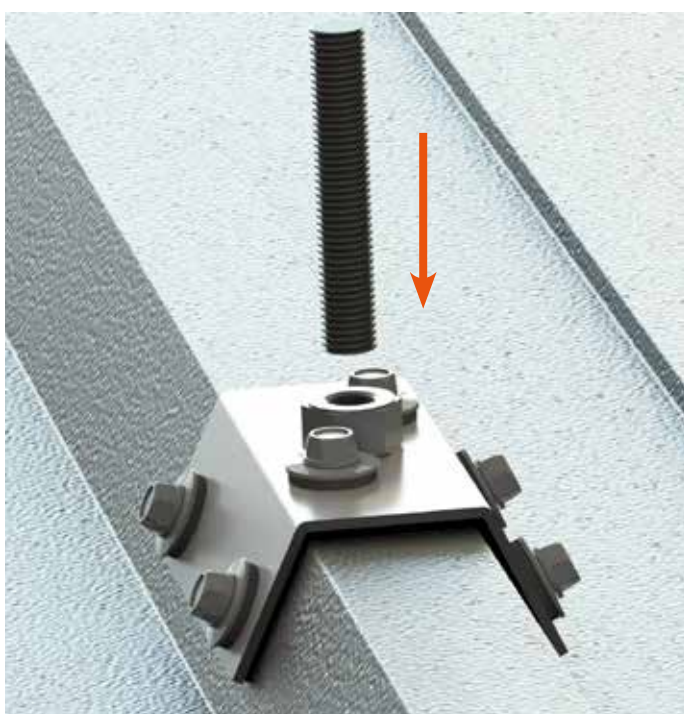
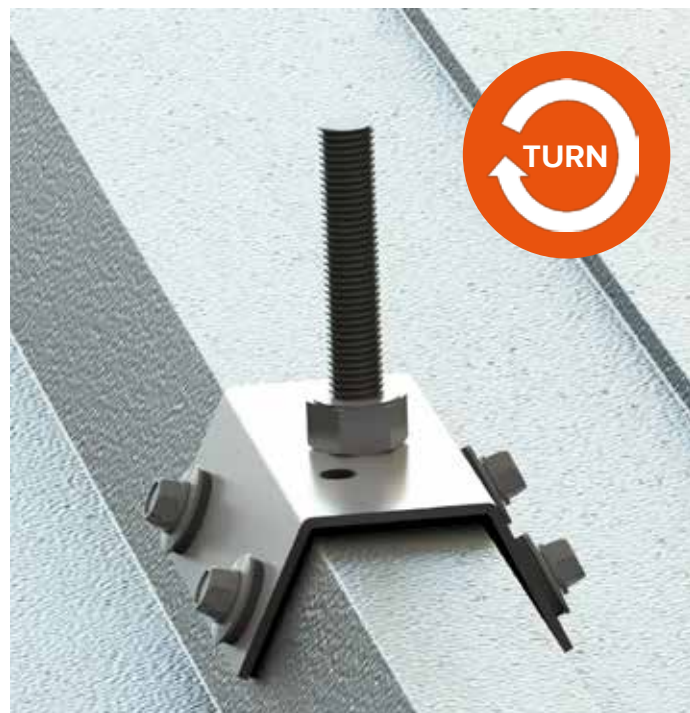
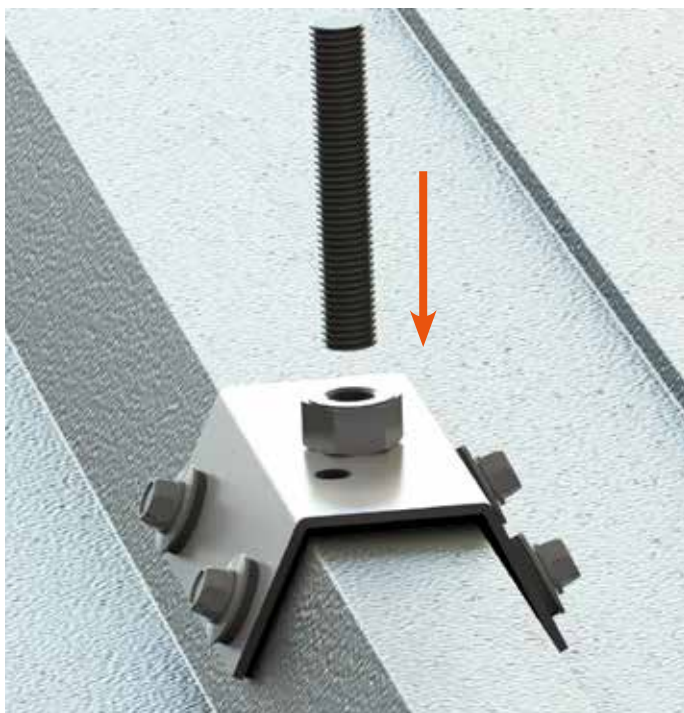
Tools & Items Required



Trapezoidal Console



M10 Rod



5

Attach the Cross Connector to the M10 Rod

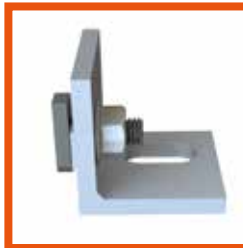
Tools & Items Required



2x 15mm
Spanners



M10 Rod



Cross
Connector



M10 Serrated
Nut

Position the Cross Connector onto the M10 Rod in between the 2x M10 Serrated Nuts. Tighten the Serrated Nuts to secure the Cross Connector.

